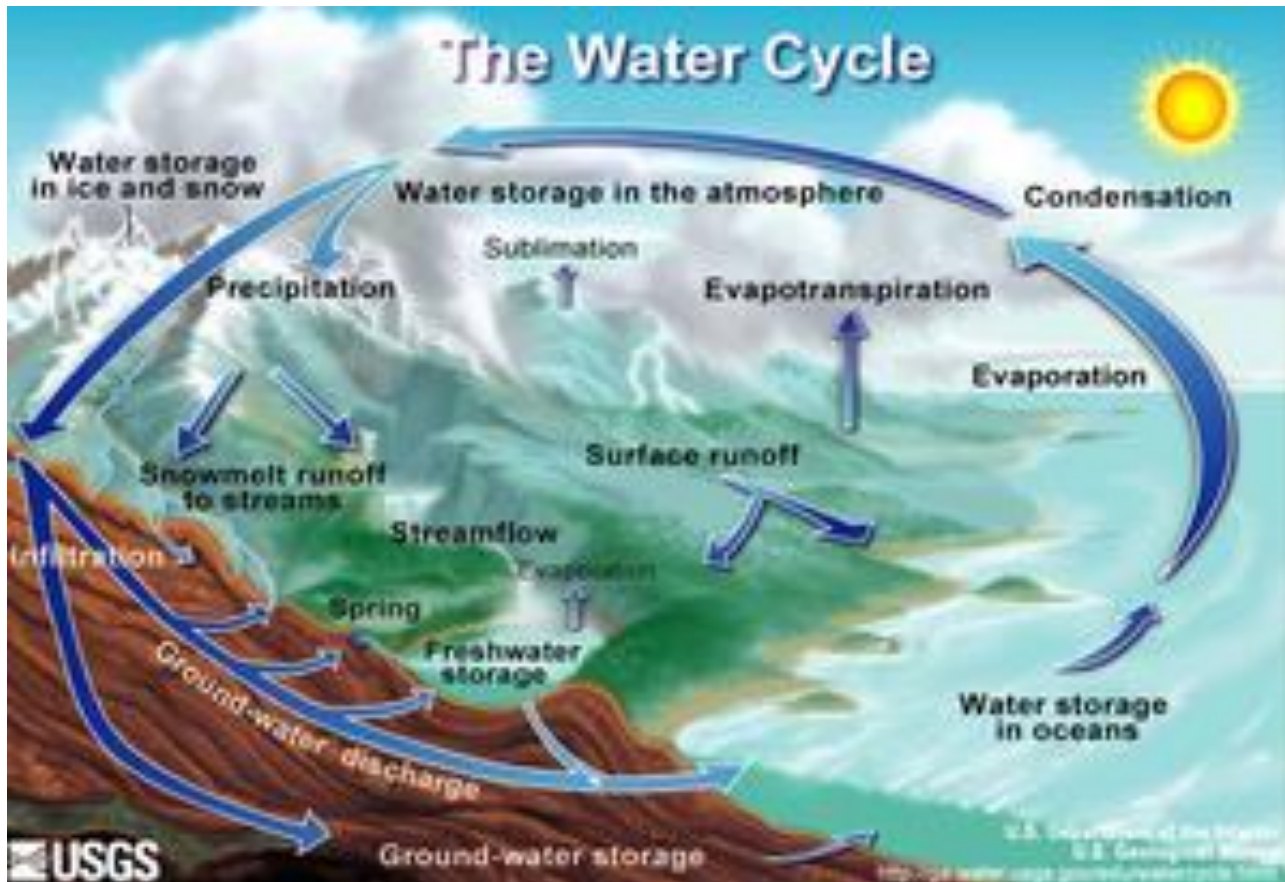


# Flood Forecasting

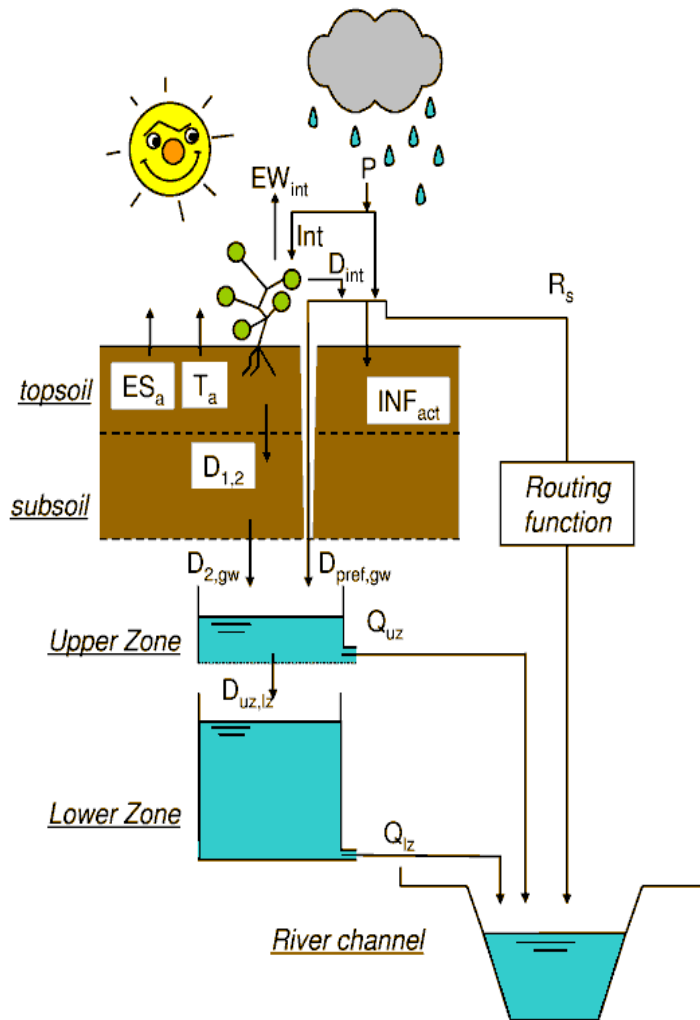
Fredrik Wetterhall  
([fredrik.wetterhall@ecmwf.int](mailto:fredrik.wetterhall@ecmwf.int))

European Centre for Medium-Range Weather Forecasts

# Hydrology – modelling the water cycle on land



# Hydrological modelling



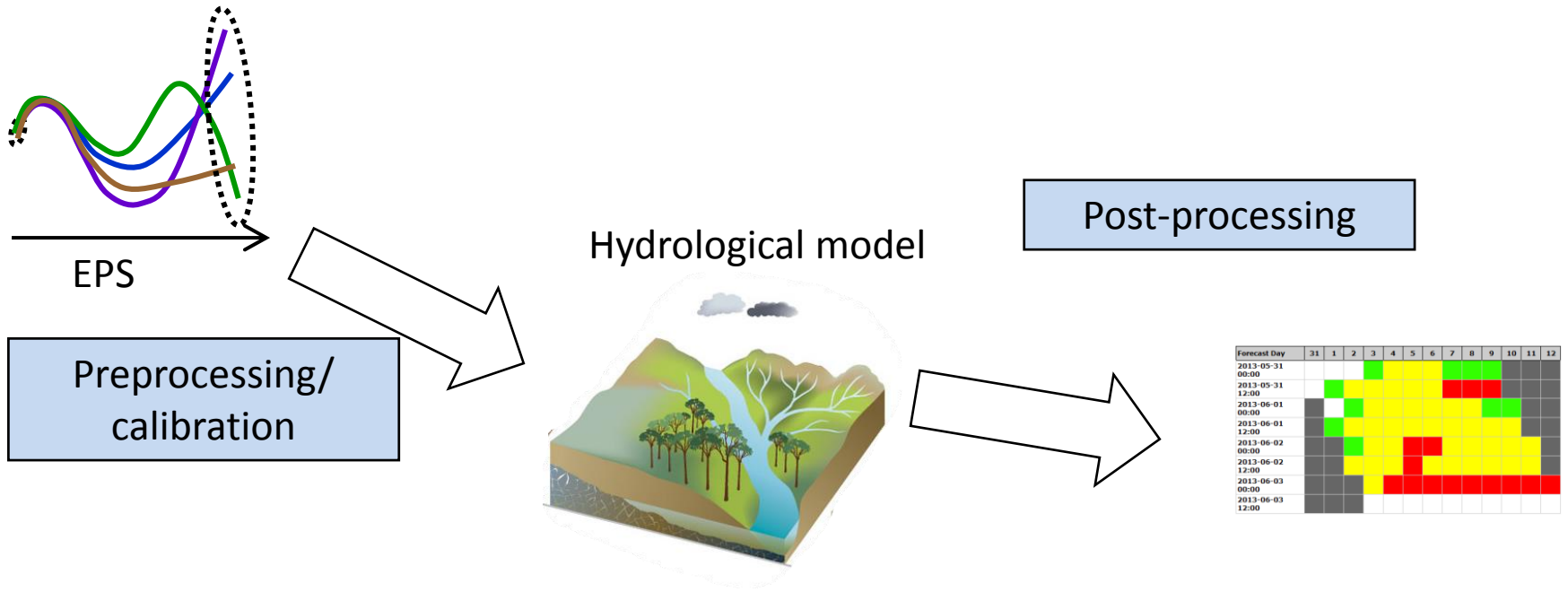
**Input:**  $P$ ,  $T$  (ET)

**State variables:**

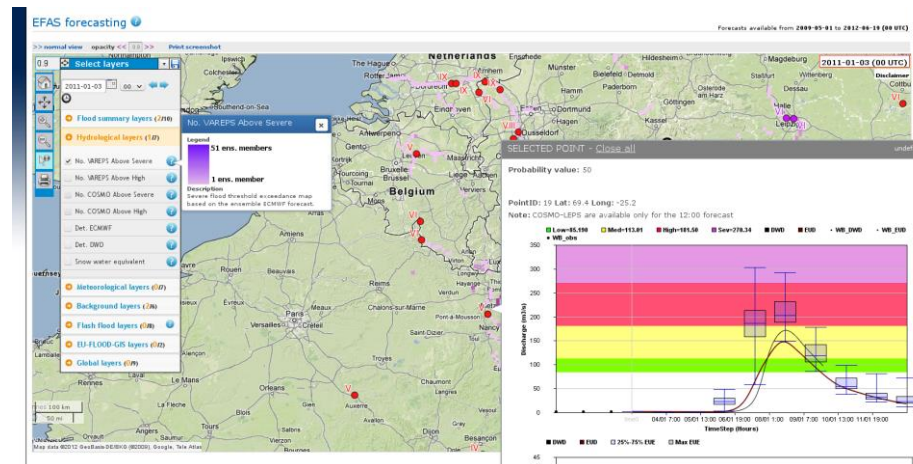
Snow, surface water, soil moisture and ground water

**Output:** River discharge, water levels

# Operational flood forecasting chain



Flood warning



# The European Flood Awareness System (EFAS)

Early probabilistic flood warnings  
across Europe

Transboundary

>60 partners

Partners provide:

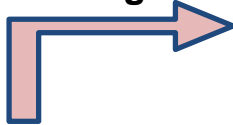
- Observations
- Feedback on warning performance
- Development of decisions

EFAS has the largest collection of  
hydro-meteorological observations in  
Europe!

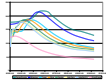


# How do we actually do flooding prediction? Schematic view

Hydrological modeling



Real-time data  
(EU-FLOOD-GIS/ETN-R)



Historical Data



Static Data



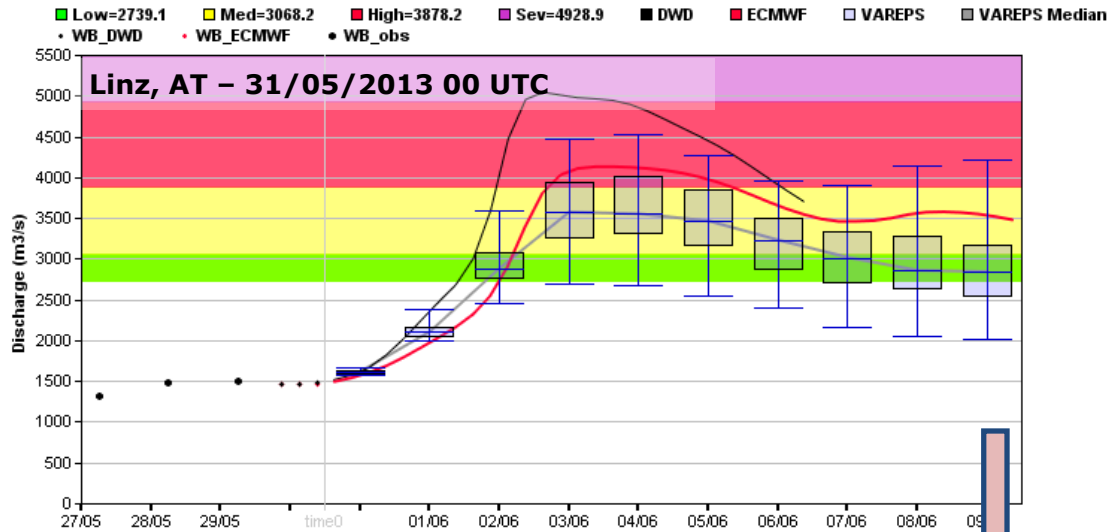
Europ. Data Layers



Meteo – Data / forecasts

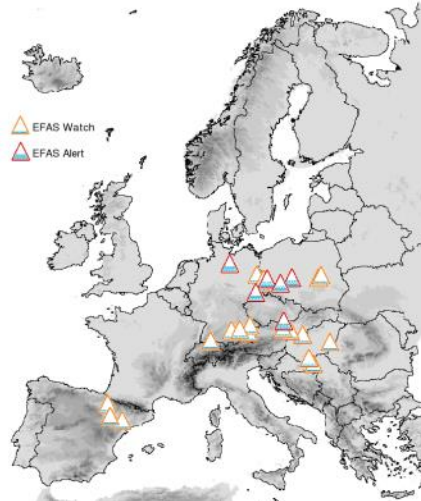


Expert Knowledge of Member States



EFAS partner network

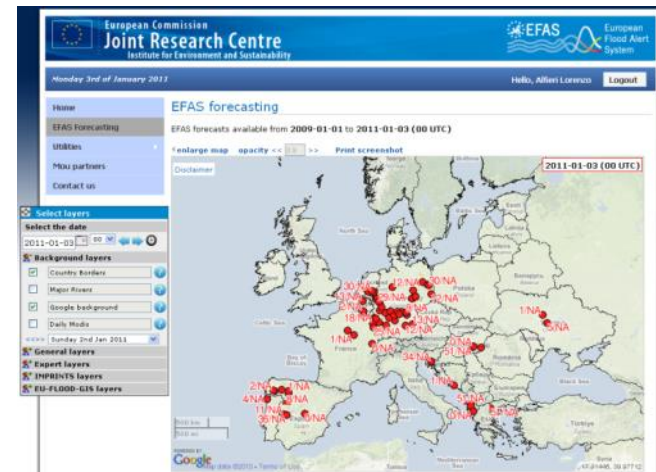
EFAS alerts and watches sent in Jun 2013



Alert email



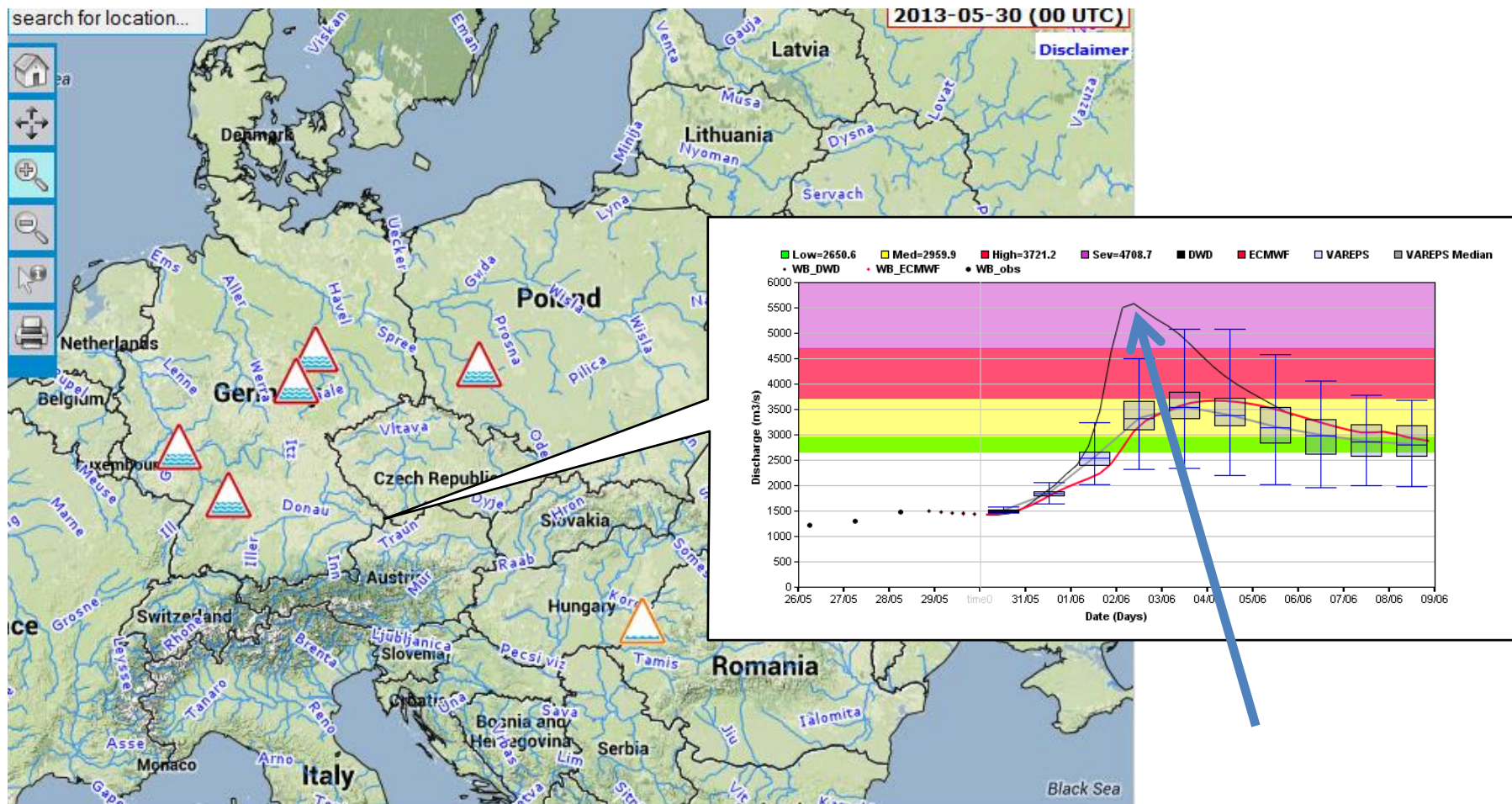
EFAS user interface





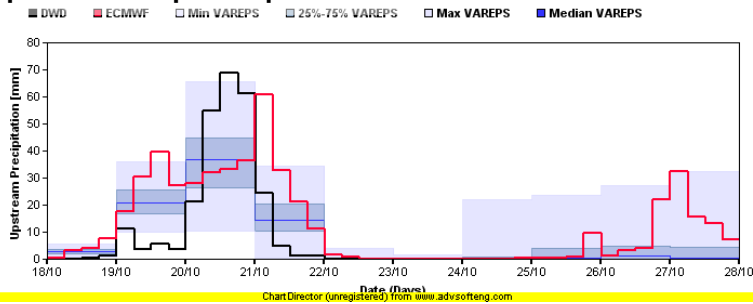
# Flood warning for Passau, Germany 30 May 2013

Donau at Passau (DE), 30/5/2013

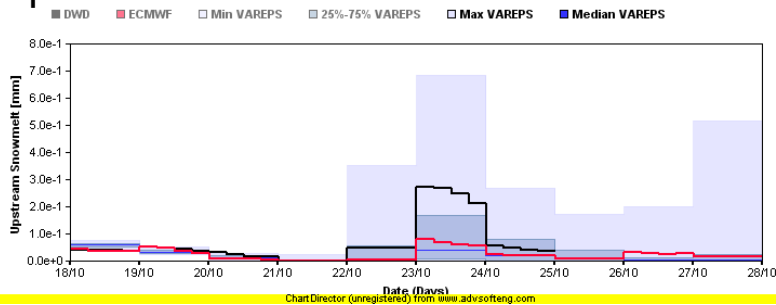


Although the flood was predicted it was not high enough. Top discharge should have been 10000

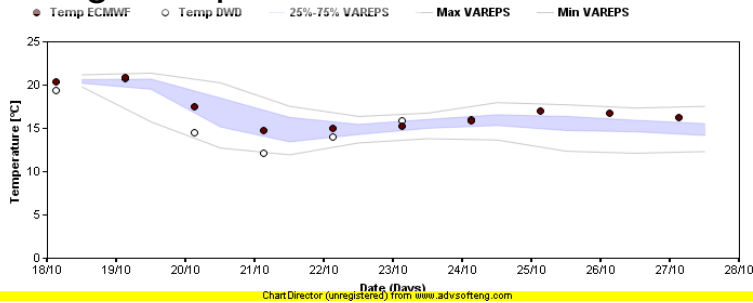
# Upstream precipitation



# Upstream snowmelt



# Average temperature



# Overview of threshold exceedances

Overview of DWD, ECMWF, EUE > HAL, EUE > SAL

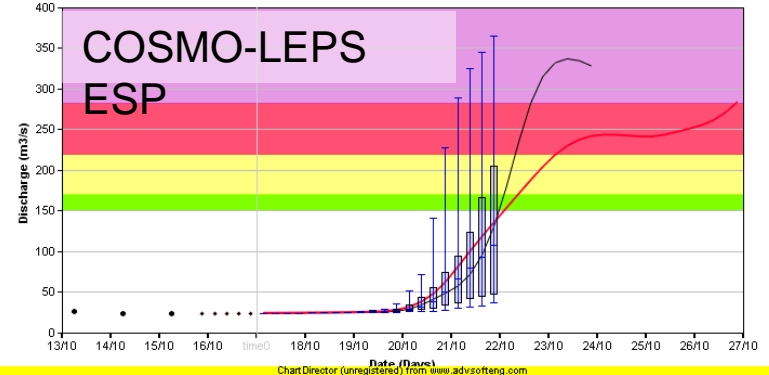
Forecast Type	18	19	20	21	22	23	24	25	26	27
DWD		↑	↑	↑	↑	↑	↑			
EUD		↑	↑	↑	↑	↑	↑	*	↓	↑
EUE > HAL				4	24	37	37	35	20	18
EUE > SAL				2	8	16	12	8	6	6

# Persistence diagram

EUE > HAL

Forecast Day	15	16	17	18	19	20	21	22	23	24	25	26	27
2012-10-15 00:00						2	2	8	8	10			
2012-10-15 12:00					2	4	14	25	25	16			
2012-10-16 00:00							6	10	16	12	6		
2012-10-16 12:00							14	29	41	41	31		
2012-10-17 00:00							2	31	43	39	27	18	
2012-10-17 12:00							18	31	35	31	25	16	
2012-10-18 00:00							4	24	37	37	35	20	18
2012-10-18 12:00					MV	MV	MV	MV	MV	MV	MV	MV	MV

Legend: Low=151.04, Med=170.87, High=219.65, Sev=282.93, DWD, ECMWF, COSMO, WB\_DWD, WB\_ECMWF, WB\_obs





Play the game!

**A risk-based decision-making  
game relevant to water  
management.  
Try it yourself!**

---

2013. This game was prepared by Louise Crochemore (IRSTEA), Florian Pappenberger (ECMWF), Schalk Jan van Andel (UNESCO-IHE), Maria-Helena Ramos (IRSTEA) and Andy Wood (NOAA).

It is intellectual property of the authors. Please kindly inform them if you use it.

Special thanks to Kevin Werner (NWS), a key designer of the original game on which this one is based.

Contact: [maria-helena.ramos@irstea.fr](mailto:maria-helena.ramos@irstea.fr)

This game is part of HEPEX activities: [www.hepex.org](http://www.hepex.org)

I agree

---

General instructions: use full screen mode. Always click on the appropriate links in each slide.  
Do not use Page Up, Page Down or arrow keys for scrolling.