

An overview of ERA5



Climate Change

Paul Berrisford, Bill Bell, Gionata Biavati, Per Dahlgren, Dick Dee, Manuel Fuentes, Hans Hersbach, Andras Horanyi, Joaquin Munoz-Sabater, Carole Peubey, Raluca Radu, Iryna Rozum, Dinand Schepers, Adrian Simmons, Cornel Soci, Sebastien Villaume

European Centre for Medium-Range Weather Forecasts
NCAS-Climate





Climate
Change

Overview

- **Overview of Reanalysis products at ECMWF**
- **ERA5, the follow up of ERA-Interim, configuration and status**
- **ERA5 performance**
- **Concluding remarks**

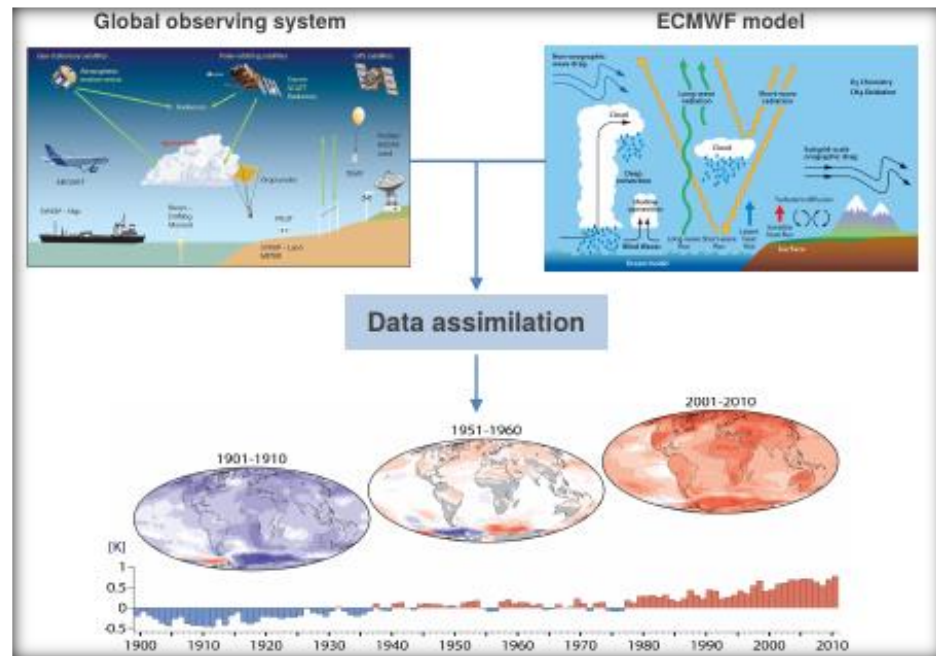


Climate
Change

Why Reanalysis?

Reanalysis offers a detailed overview of the past atmosphere (and other components)

- **Complete:** combining vast amounts of observations into (global) fields
- **Consistent:** use the same physical model and DA system throughout
- **State-of-the-art:** use the best available observations and model at highest feasible resolution
- *Reanalysis allows for a close monitoring of the Earth's climate system also where direct observations are sparse.*





Climate
Change

Reanalyses Produced at ECMWF

Atmosphere/land

including ocean waves



1) 1979 - 1981
FGGE

2) 1994 - 1996
ERA-15

3) 2001 - 2003
ERA-40

4) 2006 - ...
ERA-Interim

5) 2016 - ...
ERA5

Ocean

including sea ice

2006
ORAS3

2010 - ...
ORAS4

2016 - ...
ORAS5



Centennial

Coupled

2013 - 2015
ERA-20CM/20C

2016
CERA-20C

2017
CERA-SAT

Enhanced land

2012
ERA-Int/Land

2014
ERA-20C/Land

Copernicus
Europe's eyes on Earth
ERA5L

Atmospheric composition

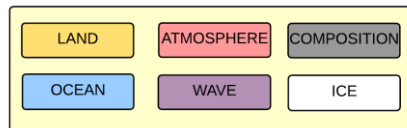


2008 - 2009
GEMS

2010 - 2011
MACC

2017 - ...
CAMS

Towards a coupled earth system





Climate
Change

ERA-Interim users worldwide

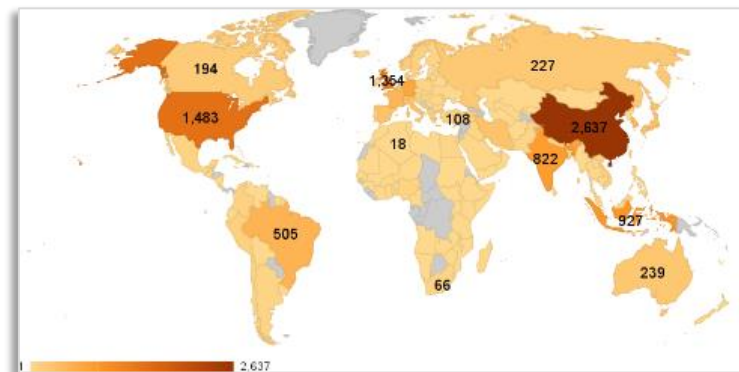
ERA-Interim had more than 20,000 unique users in 2015-2016 alone.

Users and stakeholders:

- Climate monitoring & provision of climatologies
- ECMWF member states
- Research and education, over 7,000 citations
- Public sector
- Space agencies
- Commercial applications

However, ERA-Interim is 10 years old and needs replacement

Unique registered users in 2016





Climate
Change

What is new in ERA5?

	ERA-Interim	ERA5
Period	1979 – present	Initially 1979 – present, later addition 1950-1978
Streams	1979-1989, 1989-present	Parallel streams, one/two per decade
Assimilation system	2006, 4D-Var	2016 ECMWF model cycle (41r2), 4D-Var
Model input (radiation and surface)	As in operations, (<i>inconsistent sea surface temperature</i>)	Appropriate for climate , e.g., evolution greenhouse gases, volcanic eruptions, sea surface temperature and sea ice
Spatial resolution	79 km globally 60 levels to 10 Pa	31 km globally 137 levels to 1 Pa
Uncertainty estimate		Based on a 10-member 4D-Var ensemble at 62 km
Land Component	79km	ERA5L, 9km (separate, forced by ERA5)
Output frequency	6-hourly Analysis fields	Hourly (three-hourly for the ensemble), Extended list of parameters ~ 9 Peta Byte (1950 - timely updates)
Extra Observations	Mostly ERA-40, GTS	Various reprocessed CDRs, latest instruments
Variational Bias correction	Satellite radiances, radiosondes predetermined	Also ozone, aircraft, surface pressure, newly predetermined for radiosondes.

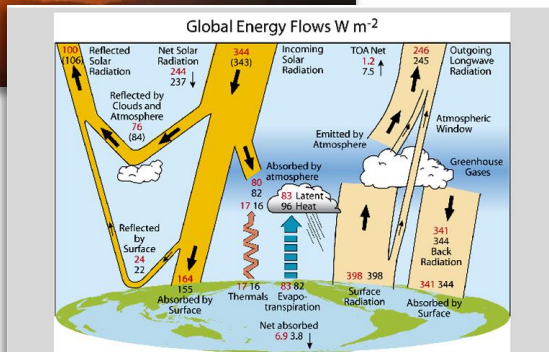


Climate Change

Forcing and boundary conditions

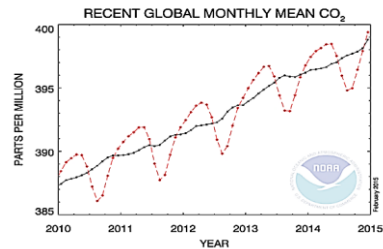
that reflect the 20th century evolution

Solar forcing



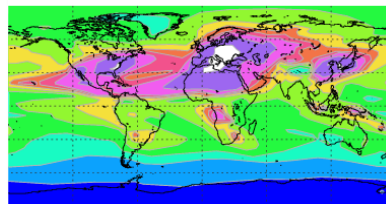
Energy flow in ERA-Interim (red) and ERA-40 (black). Berrisford et al. 2011; figure adapted from Trenberth et al., 2009

Greenhouse gases

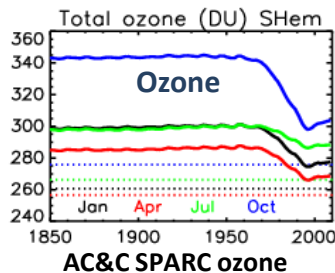


Aerosols

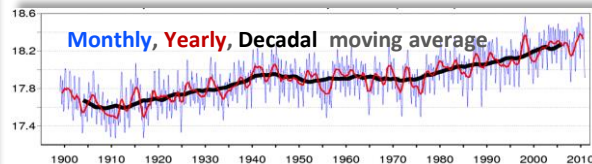
SO₄ (mg/m²) Mean 4.833, August 1980-1989, HIST



Volcanic eruptions



SST and sea ice





Climate
Change

Status of production ERA 5

Parallel production Streams:

Speed: 7-9 days/day per stream

'NRT': running 2-3 days behind real time

- so far, released 2-3 months later
- Soon: released 1 week behind real time

2008-2017: released

2000-2007: completed,

- to be released end of June

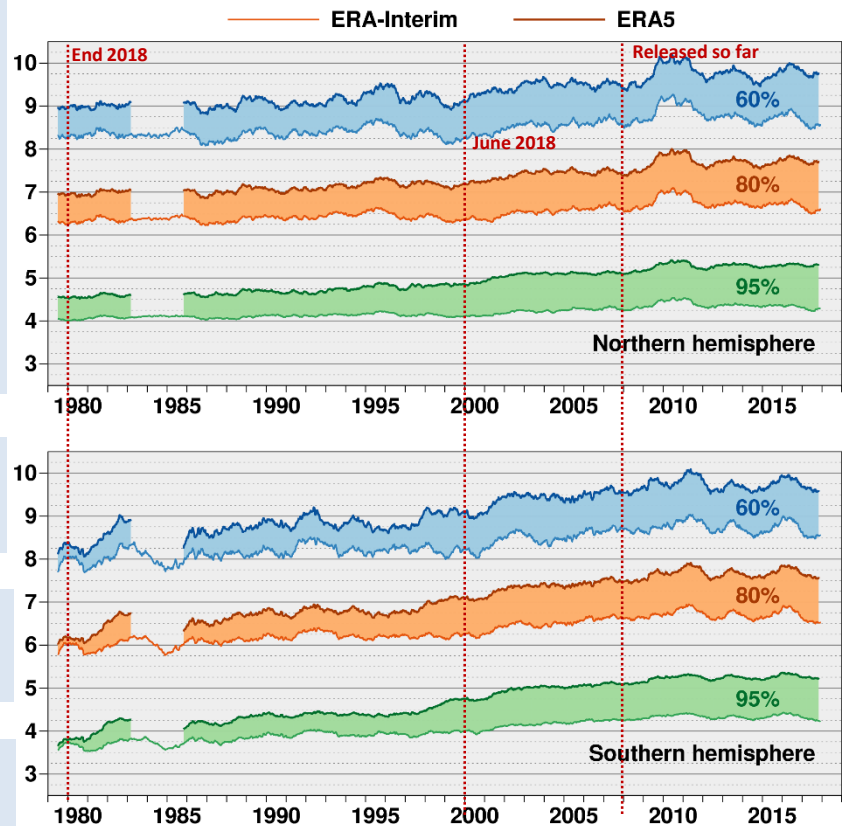
1990->1995->1999 streams: to be completed end Sept

1979->1985->1989 streams: to be completed end Sept

Back-extension from 1950: in preparation

Integration ERA5 land has just started

Range (days) when 365-day mean 500hPa height AC (%) falls below threshold



National Centre for
Atmospheric Science
NATURAL ENVIRONMENT RESEARCH COUNCIL



Copernicus
Europe's eyes on Earth





Climate
Change

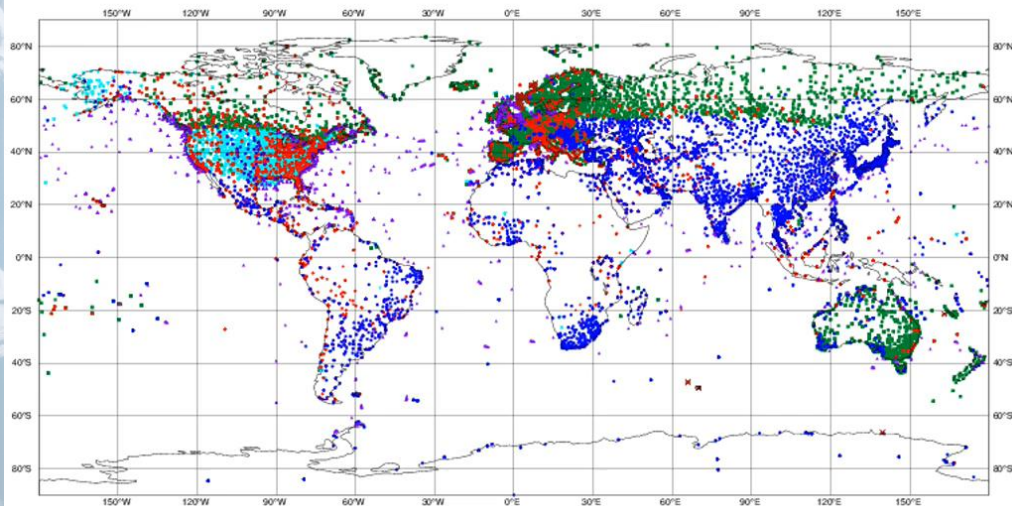
Data usage in ERA5

ECMWF data coverage (used observations) - SYNOP-SHIP-METAR

23/11/2017 00

Total number of obs = 62310

• SYNOP-LAND TAC (6186) • METAR (14413) • SHIP-TAC (2713) • METAR-AUTO (22410)
• SYNOP-SHIP BUFR (203) • SYNOP-LAND BUFR (16385)



Data sources:

In situ, conventional, satellite

Global and as resilient as possible

*Pressure, wind, temperature, humidity, wind, ozone, ..
brightness temperature, bending angles, ...*

Multivariate assimilation method:

*e.g., most variables also provide information on wind
(like pressure and brightness temperature)*

Observation counts in ERA5:

Increasing over time

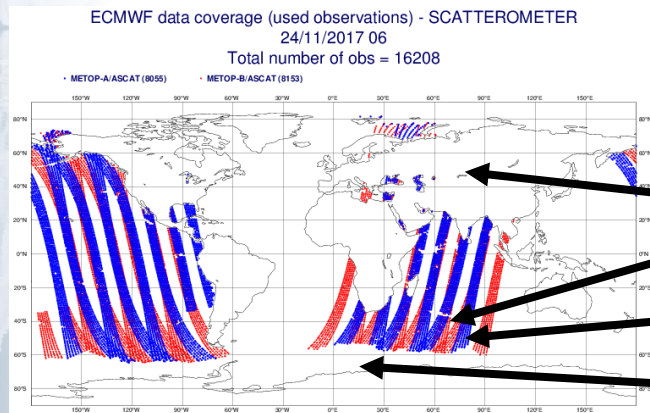
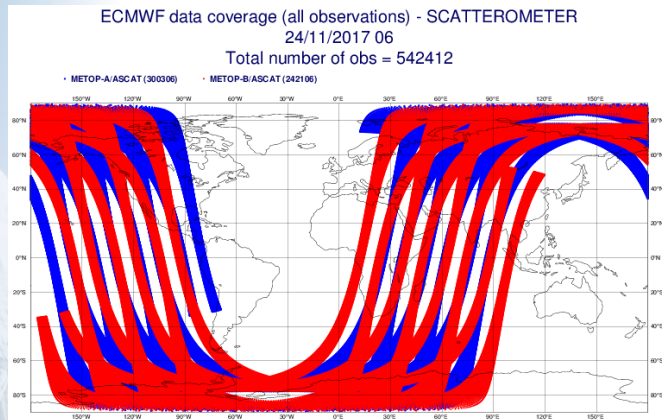
Currently ingest about 650 Million observations a day

Use about 50 Million of them



Climate
Change

Quality control



Quality Control:

Thinning and duplicate checks

Blacklisting of known suspect data

Sanity checks, such as too far from the model

Bias corrections



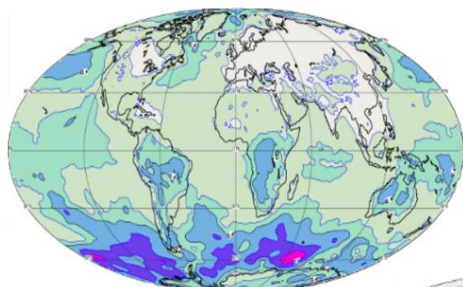
Climate
Change

Uncertainty in ERA5

Uncertainty estimate

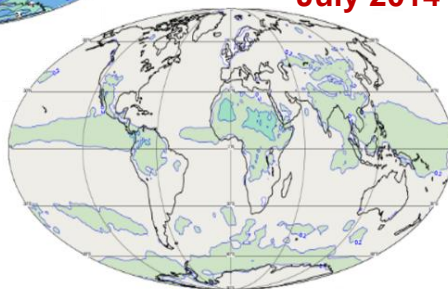
Spread in Surface Pressure (hPa)

0-0.1 0.1-0.2 0.2-0.3 0.3-0.4 0.4-0.6 0.6-0.8 0.8-1



January 1979

July 2014



- 10 member ensemble (EDA)
- J_b in ERA5: 85% static, 15% from EDA
- Ensemble spread and mean
- Spread indicates the relative uncertainty
 - in space and time
 - only accounts for random error (except SST)

Reflects variations in:

- ingested observing system
- flow-dependent sensitivity

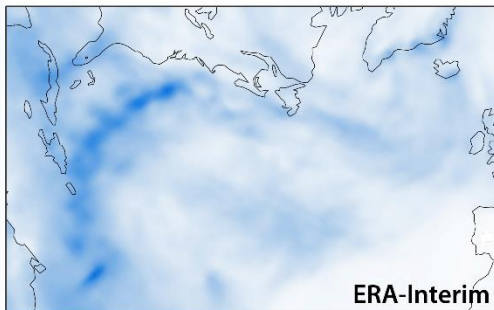
J_b is the background error covariance matrix



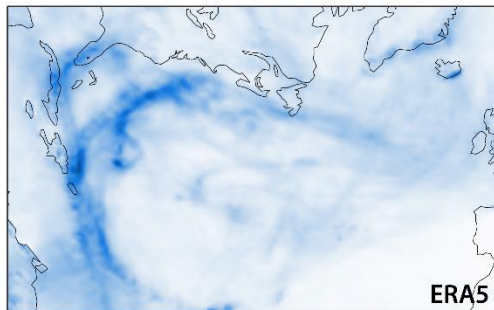
Climate
Change

Horizontal resolution and depiction of tropical cyclones

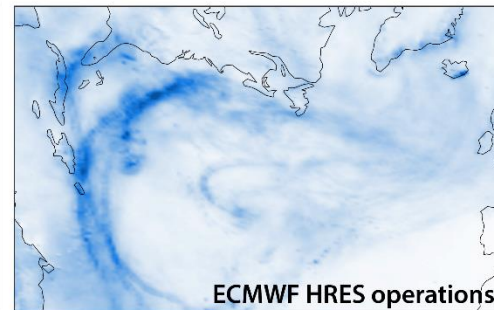
Mean precipitation rate (mm/day) for September 2017



ERA-Interim



ERA5



ECMWF HRES operations

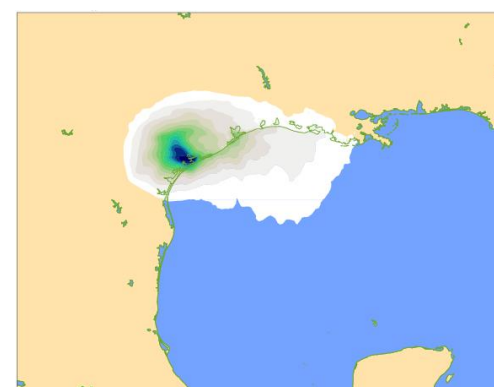
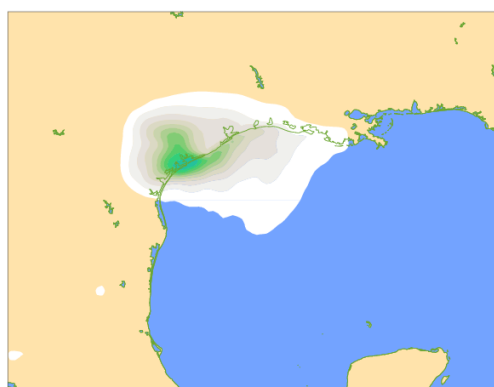
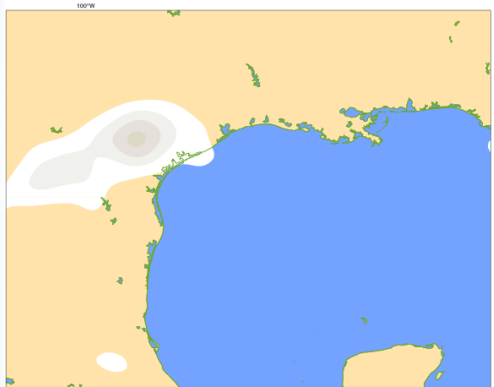


Horizontal resolutions: ~80km

~30km

~10km

5-day precipitation for Harvey

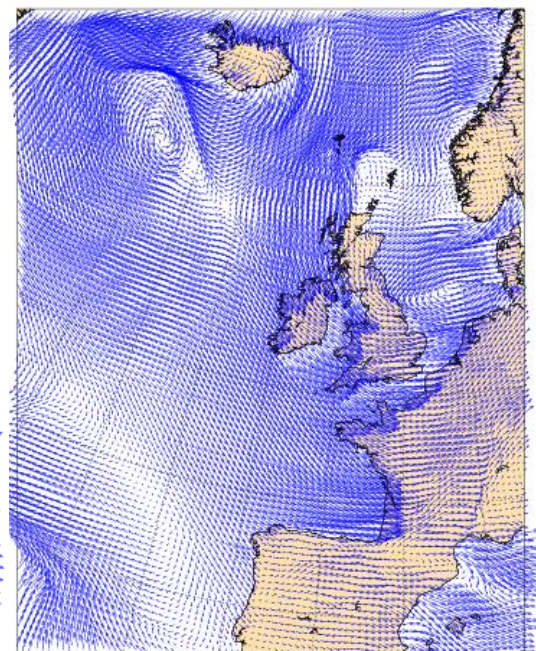
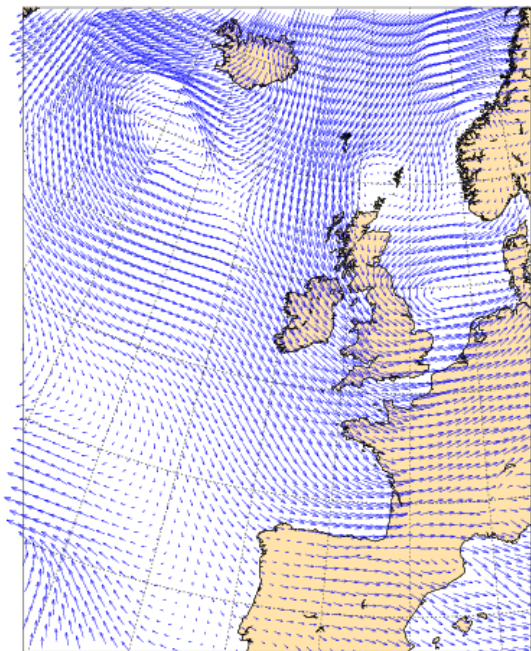




Climate
Change

Comparison with Merra-2

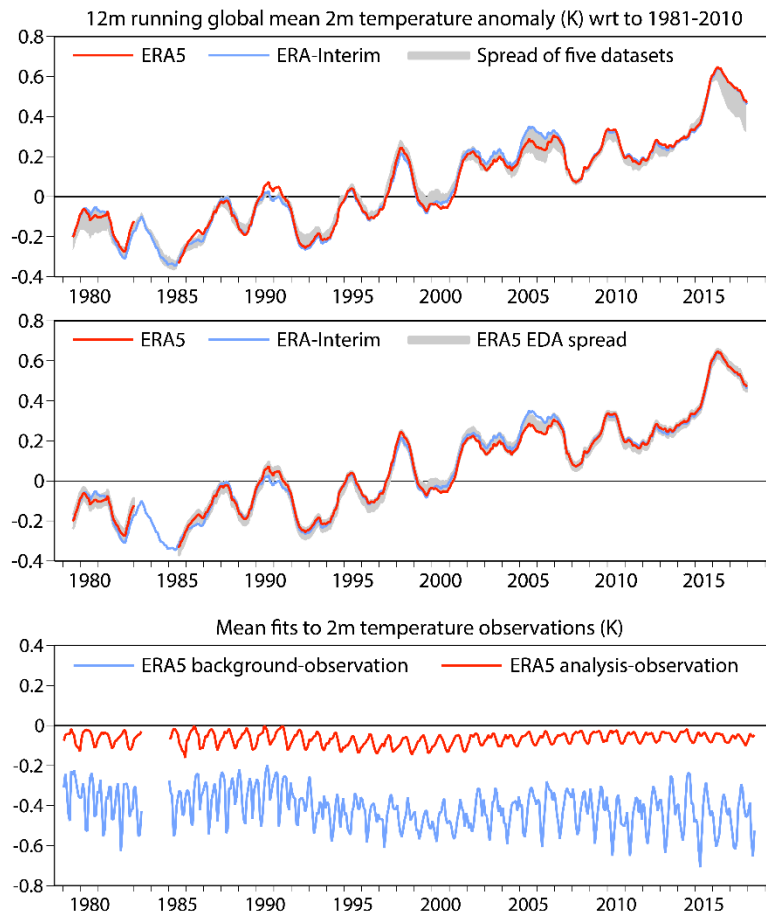
	Merra-2	ERA5
<i>Spatial resolution</i>	<i>0.5 x 0.625 degrees 72 levels to 1 Pa</i>	<i>0.28125 x 0.28125 degrees 137 levels to 1 Pa</i>
<i>Assimilation system</i>	<i>3D-Var FGAT, 6-hour window</i>	<i>4D-Var, 12-hour window</i>
<i>Output frequency</i>	<i>Hourly</i>	<i>Hourly</i>





Climate
Change

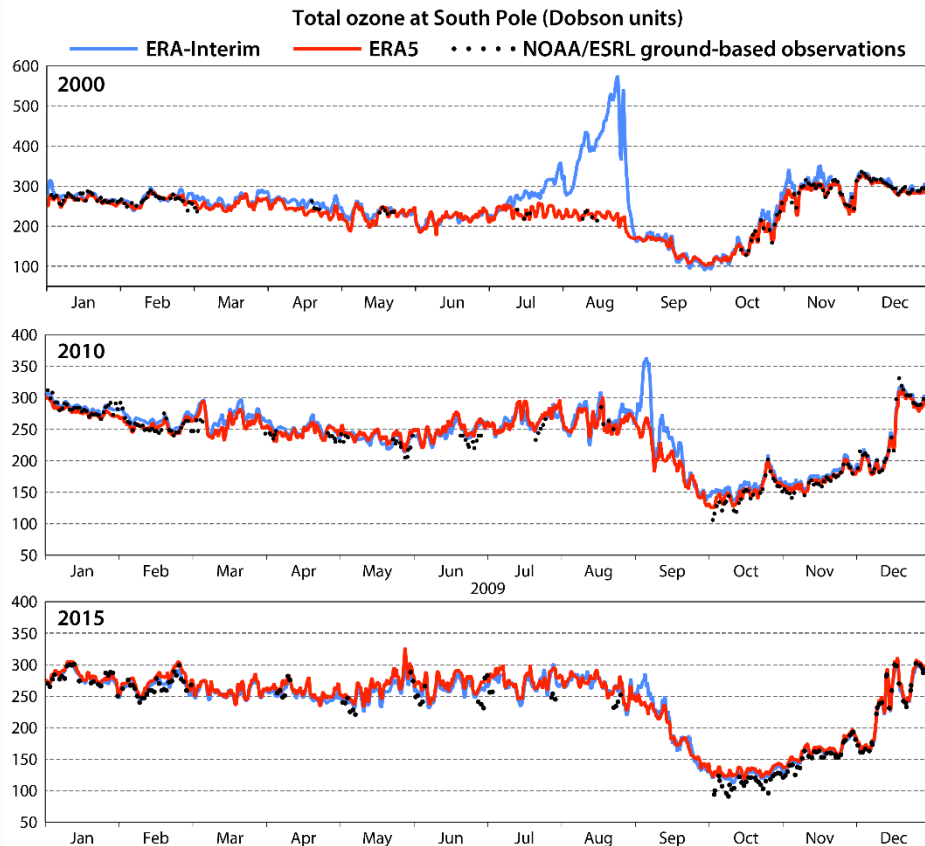
Global mean surface temperature





Climate
Change

Ozone over the South Pole



ERA-Interim assimilates no ozone data in the polar night, and structure functions can generate spurious values at the South Pole when there are increments near the edge of the polar vortex.

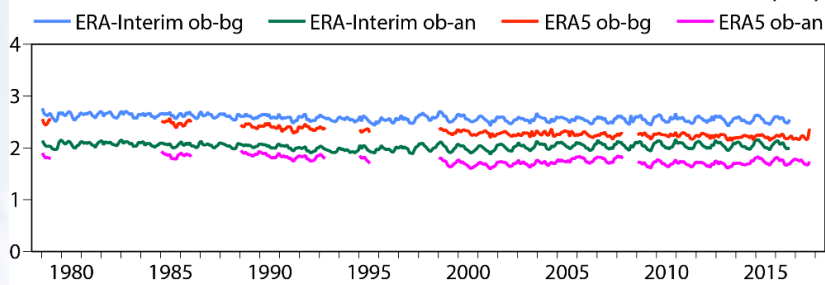
ERA5 assimilates infrared and microwave data on ozone, and has different structure functions.



Climate
Change

ERA5 performance over time compared to ERA-Interim

Global standard deviation of fits to 850hPa radiosonde meridional winds (m/s)



Troposphere

Standard deviations of (observation-background) and (observation-analysis) are generally smaller for ERA5 particularly at 850hPa

Significant wave height scatter index (%) against all available in-situ data



Courtesy: Jean Bidlot

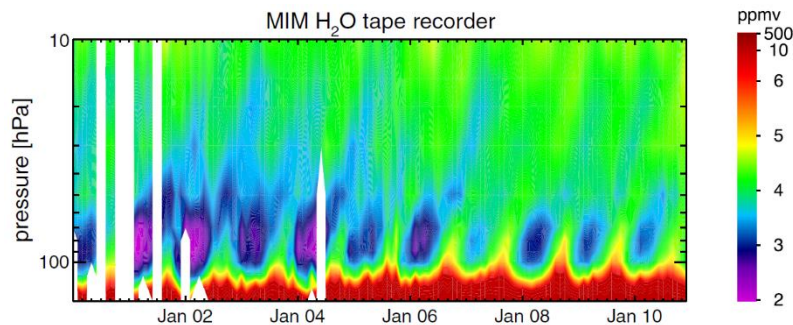
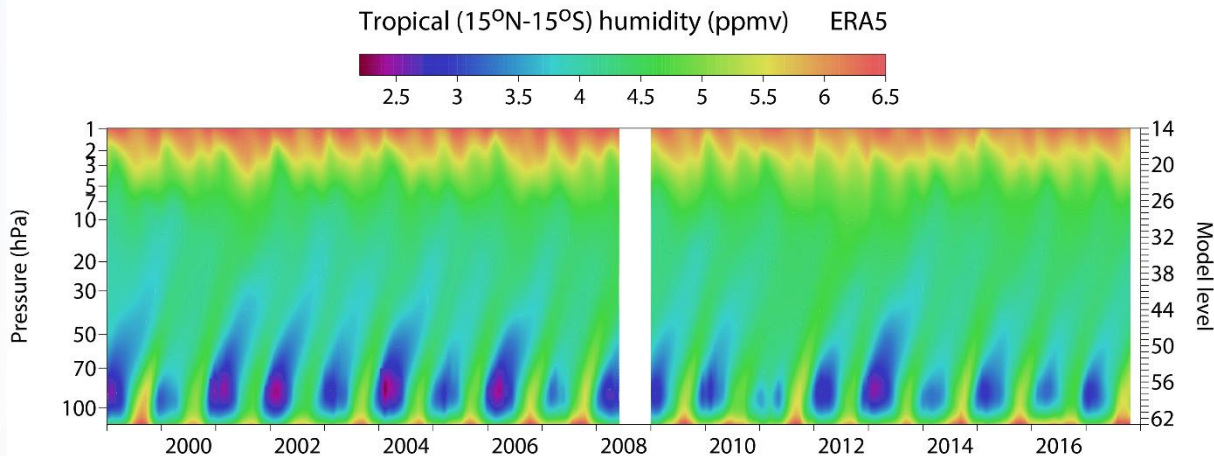
Ocean Waves

Buoy-comparison improved for ERA5



Climate
Change

Tropical stratospheric humidity



Interannual variations in the dryness of the tropical lower stratosphere are realistic.

Upward movement of the annual variation in humidity in ERA5 is not as slow as observed ...

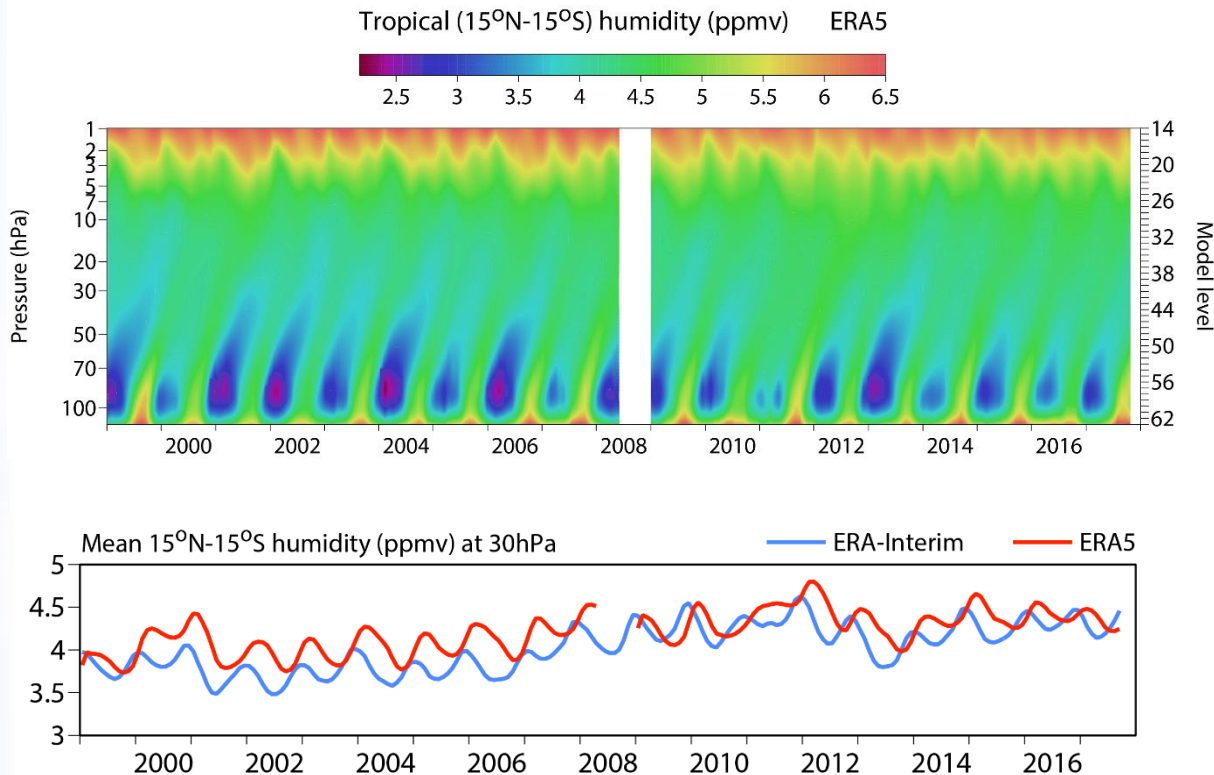
... but is slower than in ERA-Interim.

Multi-instrument mean from Hegglin *et al.* (2013) SPARC data initiative: Comparison of water vapour climatologies



Climate
Change

Tropical stratospheric humidity



Interannual variations in the dryness of the tropical lower stratosphere are realistic.

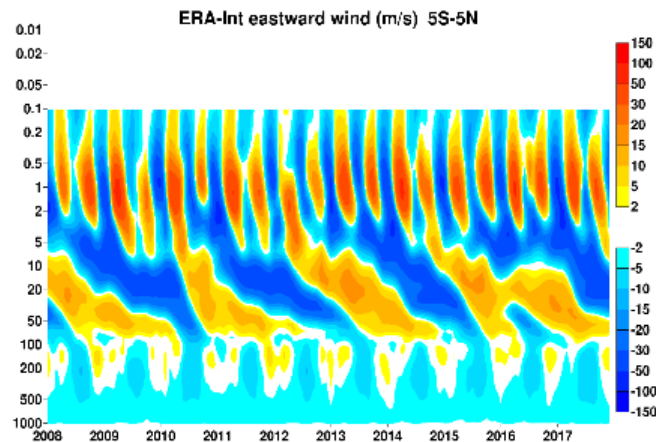
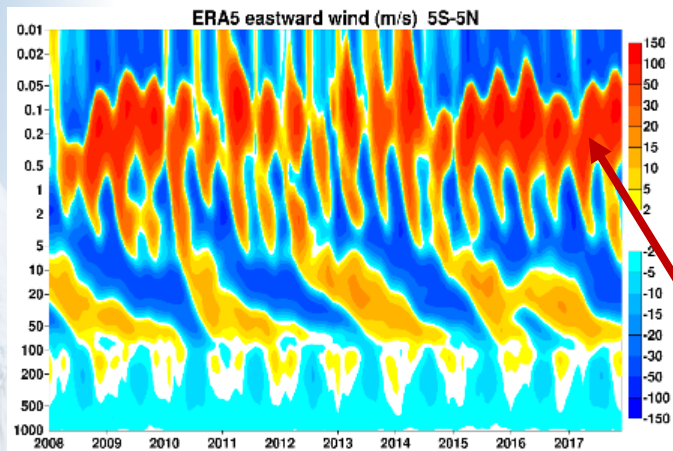
Upward movement of the annual variation in humidity in ERA5 is not as slow as observed ...

... but is slower than in ERA-Interim.

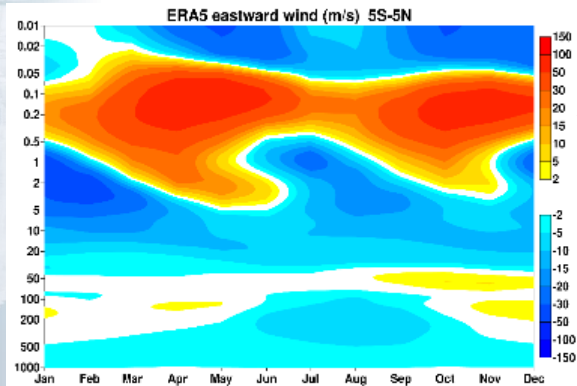


Climate Change

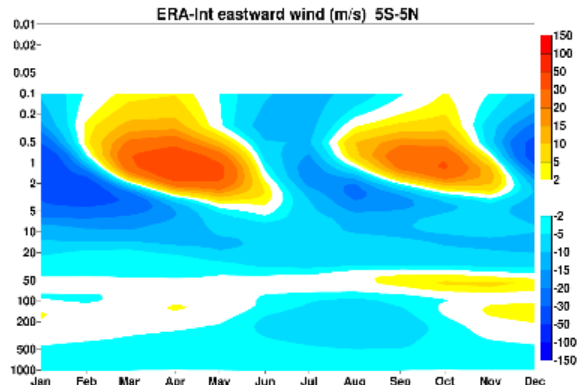
Quasi-biennial oscillation Semi-annual oscillation



QBO
consistent
between
ERA5 and
ERA-Interim



Too strong
Mesospheric jet
in ERA5
(41r2)

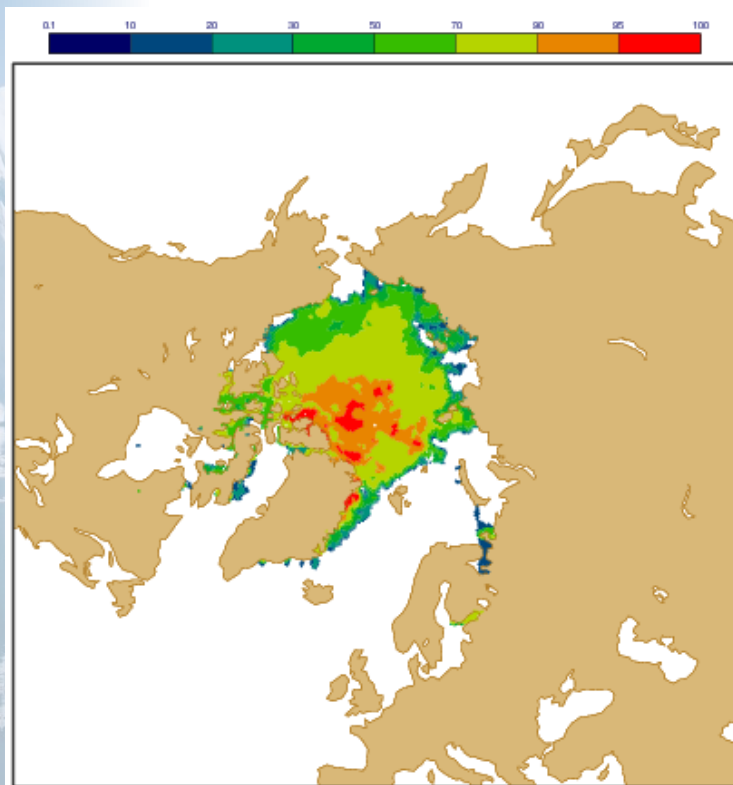




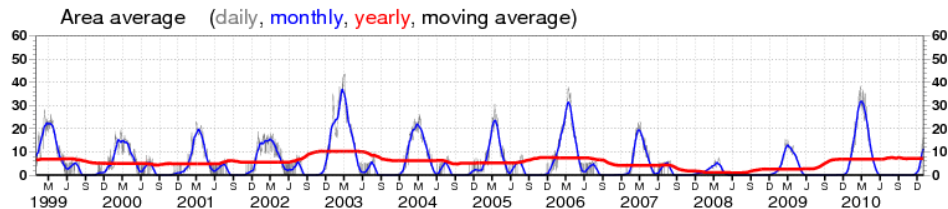
Climate
Change

ERA5 sea-ice issue over the Baltic in Summer (26 July 2006)

ERA5 original



Sea Ice Cover (percent) for ERA5 original, BALTIC



ERA5 uses OSI-SAF reprocessed data before September 2007

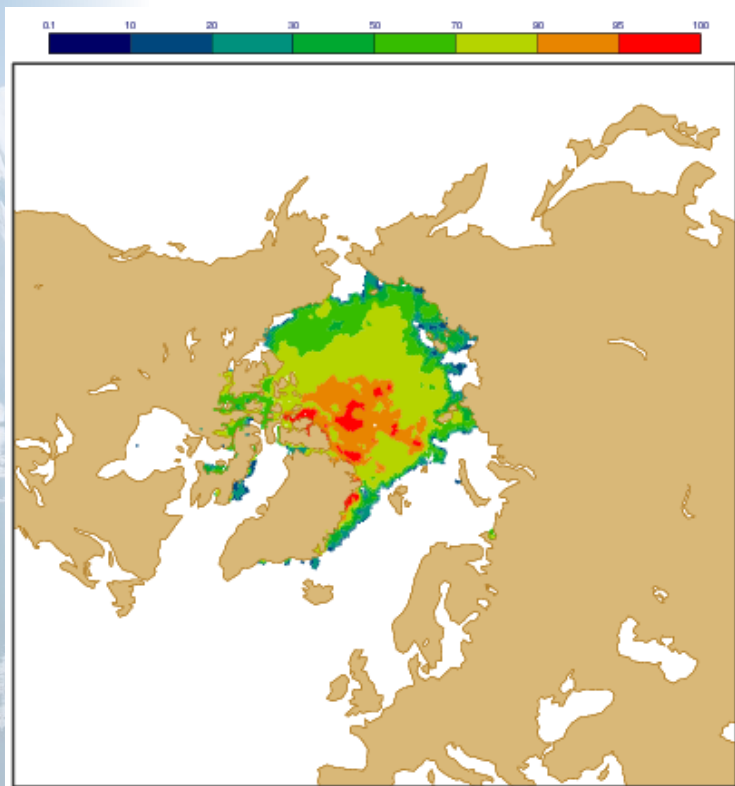
- Passive microwave radiometers suffer from land contamination
- Leads to spurious ice each Summer over the Gulf of Finland



Climate
Change

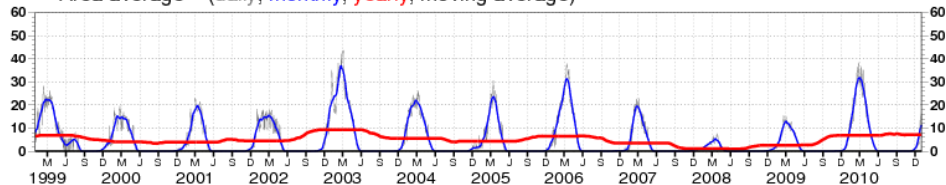
ERA5 sea-ice issue over the Baltic in Summer (26 July 2006)

ERA5 final



Sea Ice Cover (percent) for ERA5 repaired, BALTIC

Area average (daily, monthly, yearly, moving average)



ERA5 uses OSI-SAF reprocessed data before September 2007

- Passive microwave radiometers suffer from land contamination
- Leads to spurious ice each Summer over the Gulf of Finland

Decided to re-run the HRES only (the 'repair' runs)

- Re-instate check on SST (but now for > 3 Celsius)
- In addition fix Antarctic problems for 1979, 1986 and 2004
- Ice over the Caspian, and improve on SST over Great Lakes
- Improve ozone in the polar night
- Some improvements in blacklist (e.g., MSU-4 NOAA-10 in 1986)

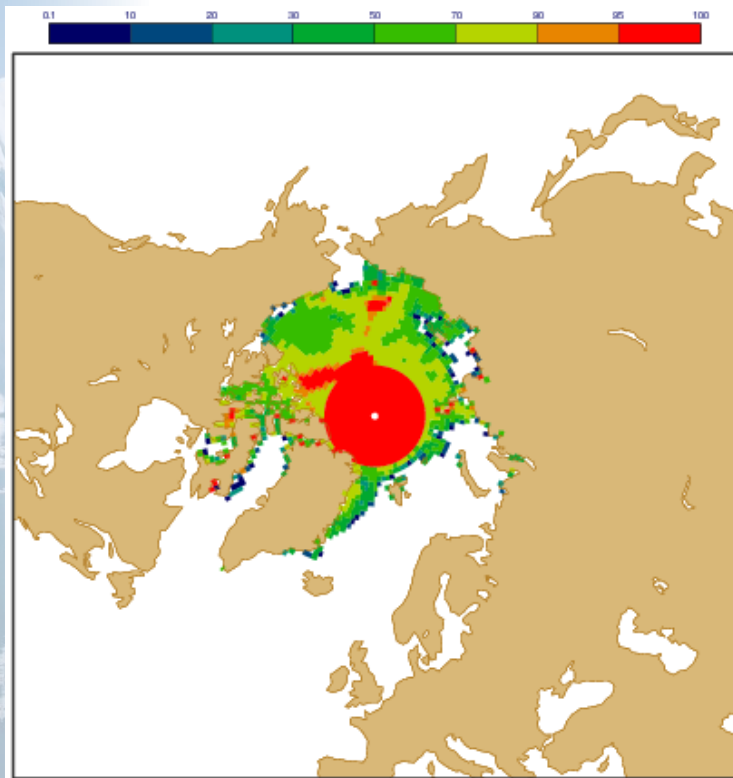
- Run in yearly streams
- Stick to original VarBC coefficients to minimize seams



Climate
Change

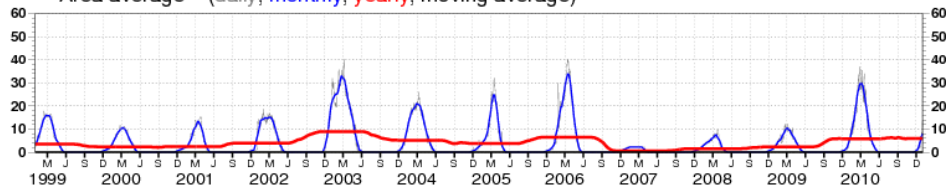
ERA5 sea-ice issue over the Baltic in Summer (26 July 2006)

ERA-Interim



Sea Ice Cover (percent) for ERA-Interim, BALTIC

Area average (daily, monthly, yearly, moving average)



ERA5 uses OSI-SAF reprocessed data before September 2007

- Passive microwave radiometers suffer from land contamination
- Leads to spurious ice each Summer over the Gulf of Finland

Decided to re-run the HRES only (the 'repair' runs)

- Re-instate check on SST (but now for > 3 Celsius)
- In addition fix Antarctic problems for 1979, 1986 and 2004
- Ice over the Caspian, and improve on SST over Great Lakes
- Improve ozone in the polar night
- Some improvements in blacklist (e.g., MSU-4 NOAA-10 in 1986)

- Run in yearly streams
- Stick to original VarBC coefficients to minimize seams

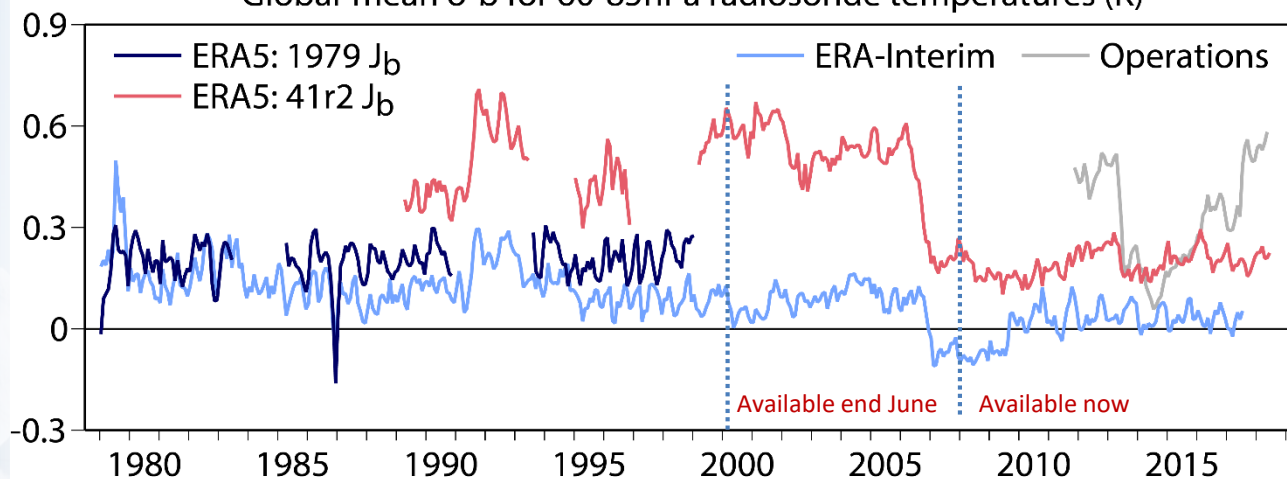
ERA-Interim has some issues too



Climate
Change

Lower stratospheric temperature

Global-mean o-b for 60-85hPa radiosonde temperatures (K)

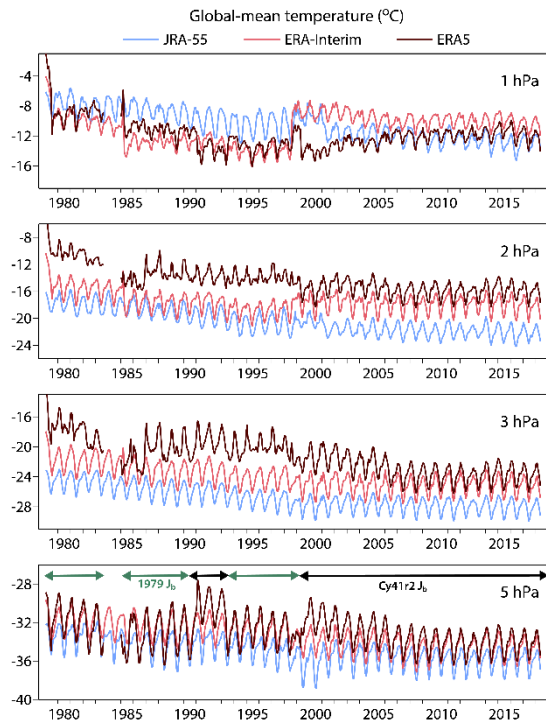


- ERA5 (41r2) has a large lower stratospheric cold bias
- **41r2 Jb** (modern observing system) is not able to provide large-scale corrections from radiosonde data
Only when abundant (anchored) GPSRO (2006 onwards) are assimilated the situation improves
- **1979 Jb** does a much better job pre-GPSRO, (especially for Pinatubo in 1991)
- Need to see where to make the transition around 1998-2000 (introduction AMSU-A)
- Peak at end of 1986 due to spin-up MSU-4 NOAA-10 to be fixed in repair run



Climate
Change

Upper stratospheric temperature

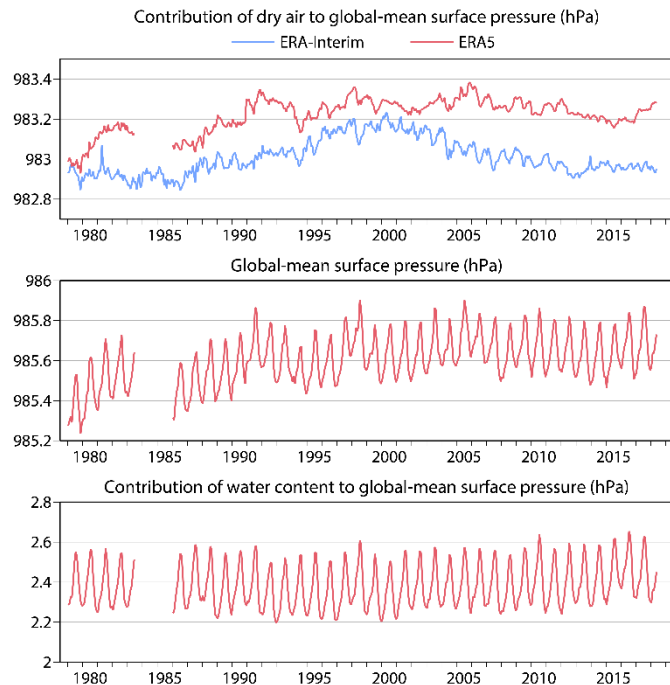


Shifts associated with J_b are particularly large at 5hPa



Climate
Change

Global dry mass

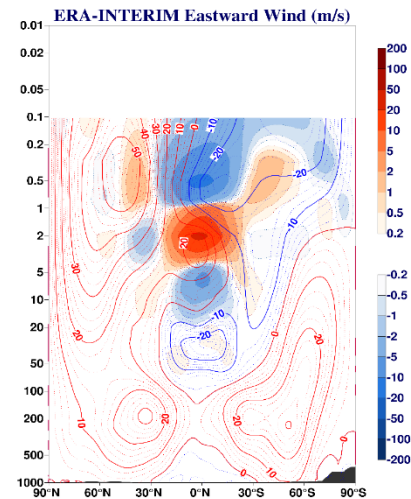
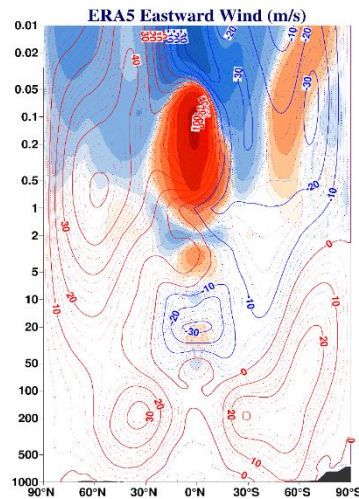
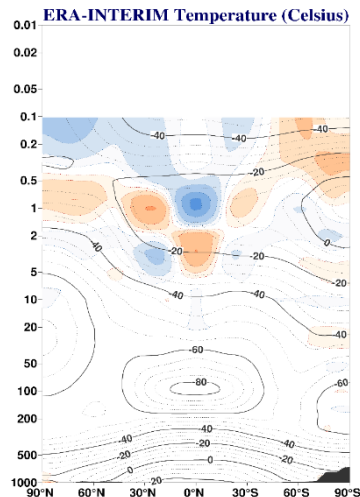
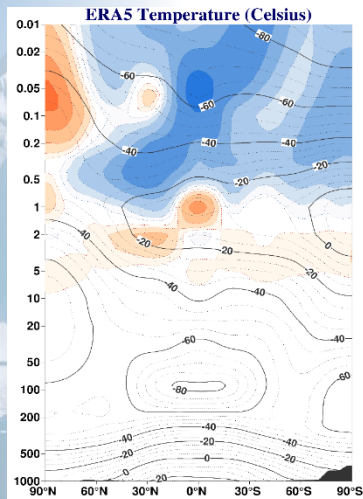


More consistent than ERA-Interim, from the 1990s



Continuity between streams

Overlap during October – December 2009



- Continuity in ERA5 is generally better than ERA-Interim in the troposphere and stratosphere
- Continuity in ERA5 is generally poor in the mesosphere

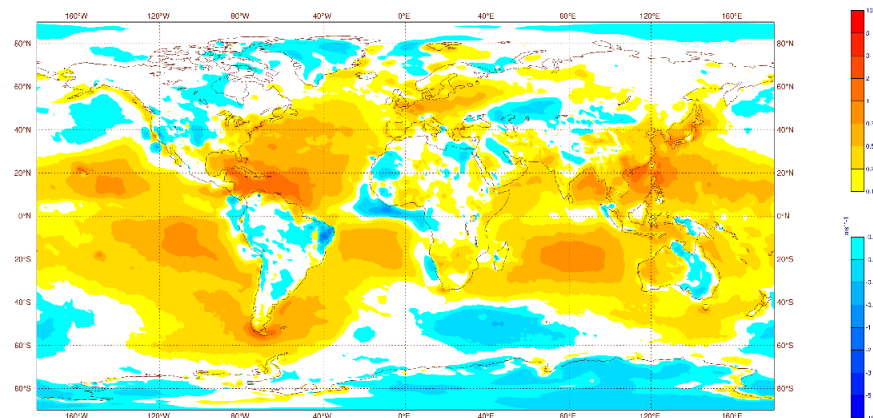
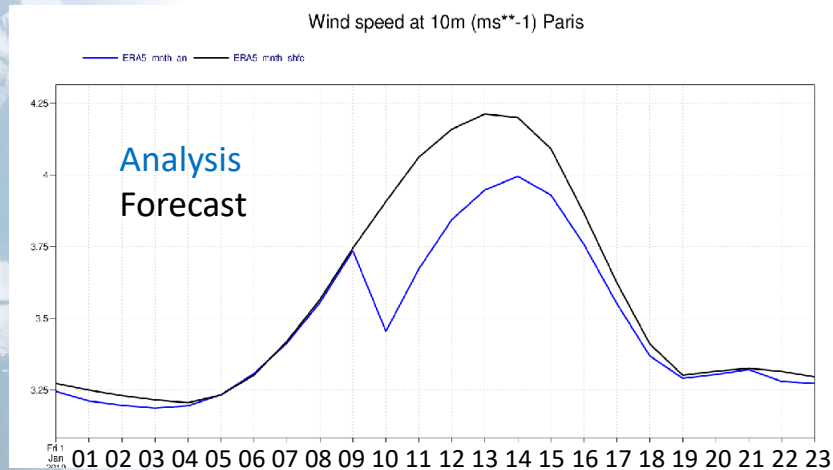


Climate
Change

Diurnal cycle of 10m wind speed

Discovered by EDF

3rd derivative of 10m wind speed



Annual climatology 2010-2017

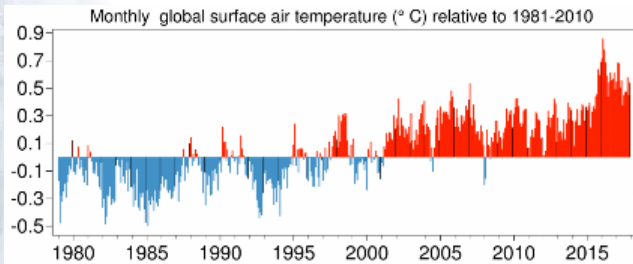


Climate
Change

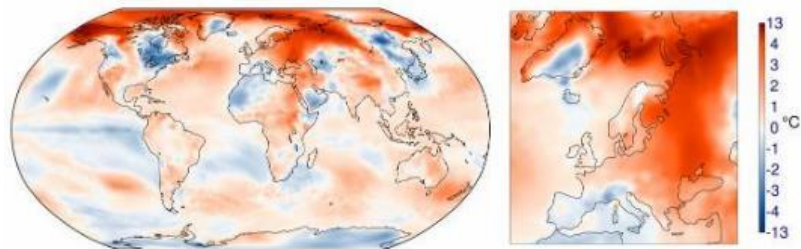
Monthly climate monitoring

Thanks to Freja Vamborg

The Copernicus Climate Change Service (C3S) includes in its product portfolio, reanalyses and a climate monitoring facility. These two products are being used to monitor the climate by providing monthly updates for several Essential Climate Variables (ECVs). The monthly updates are posted onto the Copernicus website (<https://climate.Copernicus.eu/monthly-maps-and-charts>) within a few days of the end of each month. In the future it will be extended, but currently the main source of content is the ERA-Interim global reanalysis.



Surface air temperature anomaly for December 2017 relative to 1981-2010



Globally, the warmest and second warmest instances of each month of the year occurred between October 2015 and December 2017, with the warmest instances of each month of the year occurring from October 2015 to September 2016. Consequently, this latter period is the warmest twelve months on record and had a temperature 0.64°C above the average for 1981-2010. 2016 is by far the warmest calendar year on record: its global temperature of 0.62°C above average compares with the value of 0.53°C for 2017, the second warmest calendar year, and 0.44°C for 2015, the third warmest calendar year. The spread in the global averages from various temperature datasets has been unusually large in 2016 and 2017, and some datasets rank 2017 colder than 2015. The main reason for the spread stems from differences in the coverage of the polar regions and from differences in the estimates of sea-surface temperature. All datasets agree that the last three years were the warmest on record.



Climate
Change

Summary and Final remarks

ERA-Interim is outdated and will be replaced by ERA5

As part of the Copernicus Climate Service, at ECMWF, the production of ERA5 is well underway:

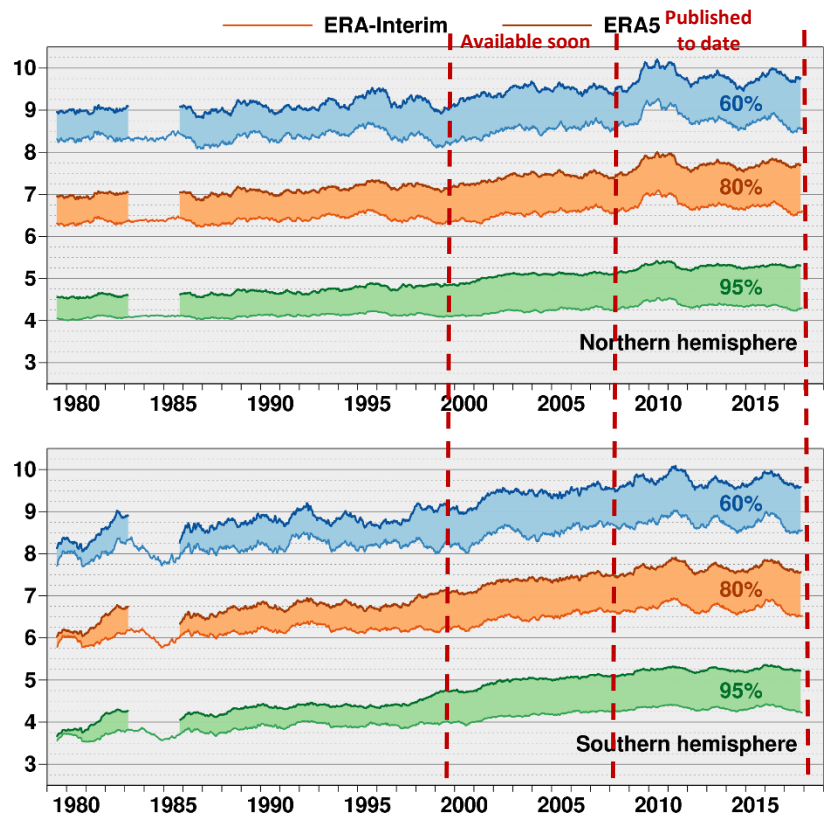
- 31km global resolution, from 1950, hourly output, uncertainty estimate.
- **To date ERA5 2008-2017 is publicly available**
- Release of other periods will be done in stages data access via the **Climate Data Store** soon.
- By end 2018: 1979 onwards.
- C3S User service Desk, Knowledge Base, FAQ's, user support

The performance of ERA5 is very promising in the troposphere.

- Winds and Ocean waves
- improved global hydrological and mass balance
- reduced biases in precipitation,
- refinement of the variability and trends of surface air temperature.

ERA5 is freely available and a timely product is to be available one week behind real time (Q3 2018)

Range (days) when 365-day mean 500hPa height AC (%) falls below threshold



National Centre for
Atmospheric Science
NATURAL ENVIRONMENT RESEARCH COUNCIL



Copernicus
Europe's eyes on Earth

